

# PINNACLE AMMUNITION

THE STANDARD IN PRECISION AMMUNITION

---

## 5.56 55GR LPLR (CQB)

CONTROLLED FRAGMENTATION ROUND

---

### PRODUCT OVERVIEW

A PURPOSE DRIVEN AND ENGINEERED CARBINE ROUND THAT LIMITS OVERALL PENETRATION AND REDUCES CHANCES OF RICOCHETED ROUNDS. IT GIVES OFFICERS GREATER CONTROL IN HIGH INTENSITY SITUATIONS THAT OPERATE IN CLOSER ENVIRONMENTS.

DESIGNATED TO LIMITING LIABILITY AND COLLATERAL DAMAGE, THIS ROUND ALLOWS OFFICERS TO ACT QUICKLY AND CONSCIOUSLY WHEN EVERY SECOND COUNTS.

### WHY IT MATTERS

TRADITIONAL DUTY ROUNDS MAY OVER-PENETRATE TARGETS OR RICOCHET OFF OF SURROUNDINGS IN THE CASE OF A MISSED TARGET, RISKING BYSTANDER HARM. CONTROLLED FRAGMENTATION MITIGATES THESE RISKS ALLOWING FOR QUICKER AND SAFER THREAT NEUTRALIZATION.

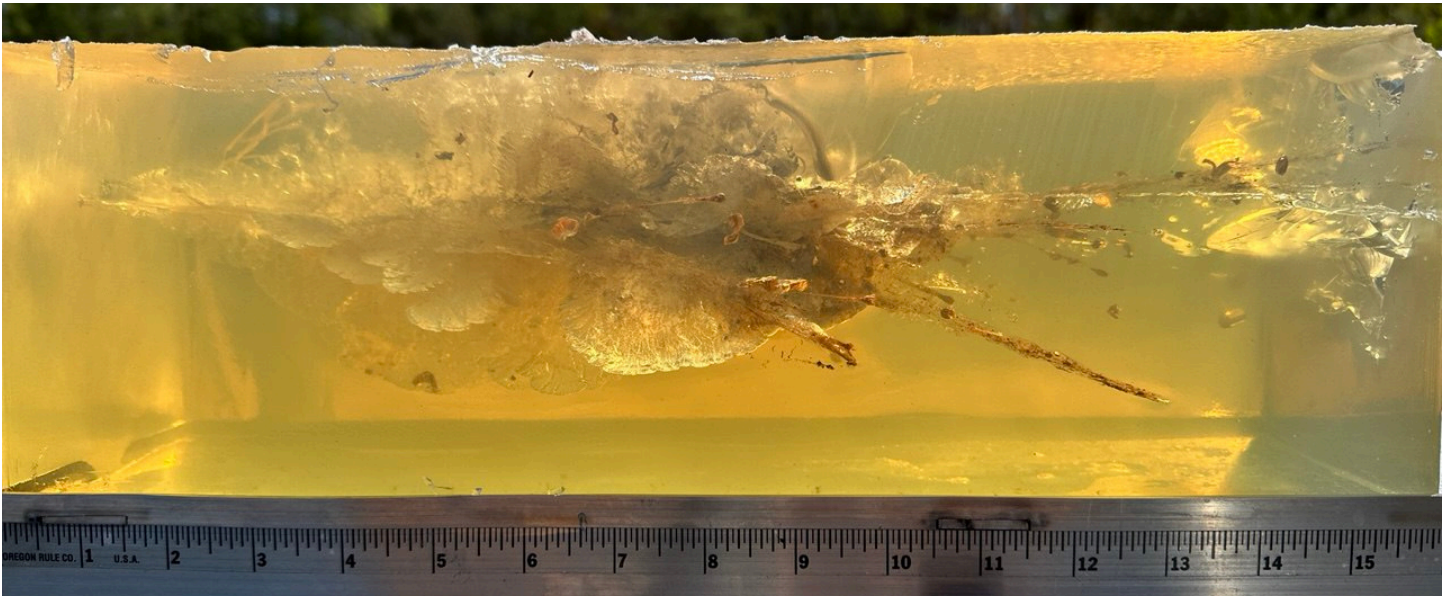
OFFICERS WILL GAIN CONFIDENCE AND CONTROL, WHICH IS ESSENTIAL FOR SPLIT SECOND DECISIONS IN THE FIELD. PURPOSE-BUILT FOR URBAN AND CONFINED-SPACE ENGAGEMENTS, THE LPLR PROVIDES RAPID ENERGY TRANSFER, MASSIVE WOUND CAVITIES AND DRAMATICALLY MITIGATED RICOCHET POTENTIAL.

### OPERATIONAL USE CASES

BEST OUTFITTED FOR:

- ENTRY & BREACH TEAMS
- COURT & EVENT SECURITY
- STADIUM & EVENT SECURITY
- FESTIVALS & PUBLIC SETTINGS
- DENSE URBAN & CROWDED ENVIRONMENTS

*\*5 SHOT GROUP AT 15 YARDS\**



## TECHNICAL SPECIFICATIONS

SPECIFICATION	VALUE
CALIBER	.55GR LIMITED PENETRATION LIMITED RICOCHET
BULLET WEIGHT	55 GRAINS
MUZZLE VELOCITY (10.5 " BARREL)	2,823 FPS
MUZZLE ENERGY	2,650 FT-LBS
STANDARD DEVIATION	10.5 FPS
RETAINED WEIGHT	N/A
EXPANSION	N/A
CASE TYPE	BRASS
PRIMER	SMALL RIFLE

## BULLET DESIGN & CONSTRUCTION

### DUAL-COMPONENT ENGINEERING

- GILDED METAL JACKET FOR FLAWLESS FEEDING AND BORE INTEGRITY
- FRANGIBLE COPPER-TIN INTERIOR POWDER FRACTURES INSTANTLY ON IMPACT
- CONTROLLED EXPANSION FOR UNIFORM TERMINAL BALLISTICS
- RAPID ENERGY DUMP TO INCAPACITATE THREATS SWIFTLY

# Tactical Applications

---

## Urban Operations

- Reduced risk of over-penetration through walls
- Minimized collateral damage in populated areas
- Safe for use in multi-unit structures

## Close Quarters Battle (CQB)

- Optimal performance at engagement distances
- Rapid incapacitation with limited penetration
- Enhanced officer safety in confined spaces

# Performance Comparison

---

Feature	LPLR	Traditional Bonded
Penetration @ 15 yds	8"	14-16"
Over-penetration risk	Minimal	High
Wound cavity	Massive	Standard
Ricochet potential	Eliminated	Present
Barrier blind	Limited	Yes

# Quality Assurance

---

## Manufacturing Standards

- Alpha Loading Systems Automated Precision Equipment
- Mectron Inspection Systems for 100% Quality Control
- Lot-to-lot consistency guaranteed
- FBI Protocol testing on every production lot

## Certifications

- Meets FBI Ammunition Testing Standards
- SAAMI Specification Compliant
- ISO 9001:2015 Certified Manufacturing
- Made in USA – Florence, Mississippi

# CONTACT INFORMATION

---

**LAW ENFORCEMENT SALES: MACON MOORE, MARK DUNBAR & WILL PATTERSON**

EMAIL:

- [MACON@PINNACLEPRECISIONUSA.COM](mailto:MACON@PINNACLEPRECISIONUSA.COM)
- [MARK@PINNACLEPRECISIONUSA.COM](mailto:MARK@PINNACLEPRECISIONUSA.COM)
- [WILL@PINNACLEPRECISIONUSA.COM](mailto:WILL@PINNACLEPRECISIONUSA.COM)

PHONE:

- [\(901\) 371-1757](tel:(901)371-1757)
- [\(901\) 598-0110](tel:(901)598-0110)
- [\(901\) 569-8588](tel:(901)569-8588)

WEBSITE: [WWW.PINNACLEPRECISIONUSA.COM](http://WWW.PINNACLEPRECISIONUSA.COM)

**SALES RESTRICTED TO QUALIFIED LAW-ENFORCEMENT AGENCIES**